



No. CANEC1622421316

: 2016 11 21

1 , 16

(SVHC)

52

SGS : CP16-069662 - SZ
 : N902
 : 3080/3080T/3090/3090T/3097/3100/3100T/3280D/3280N/ 3280W/
 3280TD/3290D/3290N/3290ND/3290W/3290TD/3290TW/ 3285/
 3295/3295T/3295DT/3296/3297T/3299/3299LT/3300L/3300LP/
 3300D/3300N/3300W/S3300/S3330/3310/3310N/3315T/3317T/
 3319/3319LT/3328TF/3328LF/3330/3330W/3330L/3335T/3337T/
 3339/3339LT/3500/3755/3348LF/3349/3359/3359F/3359LT/G3359/
 3359P/N900/N901/N902/N903/N905/N906/3368F/3369F/3368LF/
 N905SD/N3309/N3339/N3359/N3409

: 2016 11 15
 : 2016 11 15 - 2016 11 21
 :

- (i) 2016 6 20
 (1907/2006 REACH) 169 (SVHC)
- (ii) 2016 9 6
 (1907/2006 REACH) 6 (SVHC)

	0.1	
--	-----	--





No. CANEC1622421316

: 2016 11 21 2 , 16

(SVHC)

河永江

A Li

: CANEC1622421315



No. CANEC1622421316

: 2016 11 21 3 , 16

(SVHC)

:

(1)

:// . o . / / / i -i - ,

(2)

59 1907/2006 EC 57 7 4 () 1 / / () 0.1

1907/2006 EC 33 57 59 0.1

SGS ECHA SVHC :// . o i . . / o / o /SGS-CTS SVHC- -EN-11.

(3)

SVHC

31 1907/2006 REACH

(4)

790/2009 0.1 (/) / 1272/2008 CLP 1907/2006 REACH (SDS) 1272/2008 CLP 1999/45/EC 1272/2008 CLP 1999/45/EC 3 (3) 1272/2008 CLP 3 1999/45/EC () 0.2 1 (/) () P T P 0.1 (/) () (/) 0.1



No. CANEC1622421316

: 2016 11 21 4 , 16

(SVHC)

()

(5) SVHC
SVHC

SVHC

:

_____ :

SGS D

SN1 CAN16-224213.001

:

SGS - GZTC CHE -T P-092-01 GZTC CHE -T P-092-02
CP- ES V-V S GC- S HPLC-DAD/ S





No. CANEC1622421316

: 2016 11 21 5 , 16

(SVHC)

: (SVHC)

		CAS No.	001 ()	RL ()
-	SVHC	-	ND	-

: (SVHC)

		CAS No.	001 ()	RL ()
-	SVHC	-	ND	-

:

1. SVHC RL SVHC SVHC
2. RL RL ND (RL) ND SVHC
3. SGS REACH : . . . o / -o- - i - o - i-i o io - .
4. RL 0.005 ((V)
) RL 0.0005 RL 0.0025 ()
5. CP- ES
6. (H CDD) -H CDD -H CDD -H CDD CAS N
134237-50-6 134237-51-7 134237-52-8
7. , 4- , 1-
- 3- CAS No: 25550-51-0, 19438-60-9, 48122-14-1, 57110-29-9
EC No: 247-094-1, 243-072-0, 256-356-4, 260-566-1.
8. (CAS No.: 90-94-8) (CAS No.: 101-61-1) 0.1 (/)
SVHC
- 9./



No. CANEC1622421316

: 2016 11 21 6 , 16

(SVHC)

SVHC:

			CAS No.	RL ()
1	4,4 -	(DA)	101-77-9	0.050
2	2,4,6- -5-	()	81-15-2	0.050
3	C10-13	()	85535-84-8	0.050
4			120-12-7	0.050
5		(P)	85-68-7	0.050
6		(2-) (DEHP)	117-81-7	0.050
7		(T T)	56-35-9	0.050
8			7646-79-9	0.005
9			1303-28-2	0.005
10			1327-53-3	0.005
11		(D P)	84-74-2	0.050
12		(H CDD) (-H CDD, -H CDD, -H CDD)	25637-99-4, 3194- 55-6	0.050
13			7784-40-9	0.005
14			7789-12-0, 10588-01-9	0.005
15			15606-95-8	0.005
16	2,4-		121-14-2	0.050
17			79-06-1	0.050
18			90640-80-5	0.050
19			90640-81-6	0.050
20			91995-15-2	0.050



No. CANEC1622421316

: 2016 11 21 7 , 16

(SVHC)

SVHC:

			CAS No.	RL ()
	21		91995-17-4	0.050
	22		90640-82-7	0.050
	23		84-69-5	0.050
	24		7758-97-6	0.005
	25	(C. . 104)	12656-85-8	0.005
	26	(C. . 34)	1344-37-2	0.005
	27		65996-93-2	0.050
	28	(2-)	115-96-8	0.050
	29		7789-09-5	0.005
	30		10043-35-3, 11113-50-1	0.005
	31		1303-96-4, 1330-43-4, 12179-04-3	0.005
	32		7789-00-6	0.005
	33		7778-50-9	0.005
	34		7775-11-3	0.005
	35		12267-73-1	0.005
	36		79-01-6	0.050
V	37		110-80-5	0.050
V	38		109-86-4	0.050
V	39	,	7738-94-5 - 13530-68-2	0.005



No. CANEC1622421316

: 2016 11 21 8 , 16

(SVHC)

SVHC:

			CAS No.	RL ()
V	40		1333-82-0	0.005
V	41		513-79-1	0.005
V	42		71-48-7	0.005
V	43		10141-05-6	0.005
V	44		10124-43-3	0.005
V	45	1,2,3-	96-18-4	0.050
V	46	1,2- - (C6-8) (C7)	71888-89-6	0.050
V	47	1,2- - (C7-11) ()	68515-42-4	0.050
V	48	1- -2-	872-50-4	0.050
V	49		111-15-9	0.050
V	50		7803-57-8, 302-01-2	0.050
V	51		7789-06-2	0.005
V	52	1,2-	107-06-2	0.050
V	53	4,4 - -3,3 -	101-14-4	0.050
V	54	2-	90-04-0	0.050
V	55		140-66-9	0.050
V	56		650-017-00-8 (o.)	0.005
V	57		7778-39-4	0.005
V	58		111-96-6	0.050
V	59		117-82-8	0.050



No. CANEC1622421316

: 2016 11 21 9 , 16

(SVHC)

SVHC:

			CAS No.	RL ()
V	60		7778-44-1	0.005
V	61		24613-89-6	0.005
V	62		25214-70-4	0.050
V	63		13424-46-9	0.005
V	64		6477-64-1	0.005
V	65		15245-44-0	0.005
V	66	N,N-	127-19-5	0.050
V	67		49663-84-5	0.005
V	68		77-09-8	0.050
V	69		11103-86-9	0.005
V	70		3687-31-8	0.005
V	71		650-017-00-8 (o.)	0.005
V	72	C. . 26	2580-56-5	0.050
V	73	C. . 3	548-62-9	0.050
V	74	(TEGD E)	112-49-2	0.050
V	75	(EGD E)	110-71-4	0.050
V	76	4,4- () ()	90-94-8	0.050
V	77	4,4- ()-4 -	561-41-1	0.050
V	78		1303-86-2	0.005
V	79		75-12-7	0.050



No. CANEC1622421316

: 2016 11 21

10 , 16

(SVHC)

SVHC:

			CAS No.	RL ()
V	80		17570-76-2	0.005
V	81	N,N,N,N- -4,4- ()	101-61-1	0.050
V	82	1,3,5- ()-1,3,5- -2,4,6-(1H, 3H,5H)- (TG C)	2451-62-9	0.050
V	83	C. . 4	6786-83-0	0.050
V	84	1,3,5- -(2S 2R)-2,3- -1,3,5- -2,4,6-(1H, 3H, 5H)- (-TG C)	59653-74-6	0.050
V	85		69011-06-9	0.005
V	86	1,2- - ()	84777-06-0	0.050
V	87		629-14-1	0.050
V	88	1-	106-94-5	0.050
V	89	3- -2- -2-(3-)-1,3-	143860-04-2	0.050
V	90		-	0.050
V	91	4,4- -3,3-	838-88-0	0.050
V	92	4,4-	101-80-4	0.050
V	93	4-	60-09-3	0.050
V	94	2,4-	95-80-7	0.050
V	95	4- ()	-	0.050
V	96	2- -5-	120-71-8	0.050
V	97		51404-69-4	0.005
V	98	4-	92-67-1	0.050
V	99	(D DE)	1163-19-5	0.050



No. CANEC1622421316

: 2016 11 21

11 , 16

(SVHC)

SVHC:

			CAS No.	RL ()
V	100	-1,2- , - -1,2- , - -1,2-	85-42-7, 13149-00-3, 14166-21-3	0.050
V	101		123-77-3	0.050
V	102	(D TC)	683-18-1	0.050
V	103		64-67-5	0.050
V	104		605-50-5	0.050
V	105		77-78-1	0.050
V	106		88-85-7	0.050
V	107	()	12578-12-0	0.005
V	108	C16-18-	91031-62-8	0.005
V	109		110-00-9	0.050
V	110		2058-94-8	0.050
V	111		376-06-7	0.050
V	112	,3- ,4- ,1-		0.050
V	113		13814-96-5	0.005
V	114		20837-86-9	0.005
V	115		10099-74-8	0.005
V	116		1317-36-8	0.005
V	117		12036-76-9	0.005
V	118		1314-41-6	0.005
V	119		12060-00-3	0.005



No. CANEC1622421316

: 2016 11 21 12 , 16

(SVHC)

SVHC:

			CAS No.	RL ()
V	120		12626-81-2	0.005
V	121		625-45-6	0.050
V	122	1,2-	75-56-9	0.050
V	123	N,N-	68-12-2	0.050
V	124	N-	79-16-3	0.050
V	125		776297-69-9	0.050
V	126	-	97-56-3	0.050
V	127	2-	95-53-4	0.050
V	128		72629-94-8	0.050
V	129		12065-90-6	0.005
V	130		8012-00-8	0.005
V	131		68784-75-8	0.005
V	132		11120-22-2	0.005
V	133		62229-08-7	0.005
V	134		78-00-2	0.005
V	135		12202-17-4	0.005
V	136		307-55-1	0.050
V	137		1319-46-6	0.005
V	138		12141-20-7	0.005
	139	4- ()	-	0.050
	140	(APF)	3825-26-1	0.050



No. CANEC1622421316

: 2016 11 21

13 , 16

(SVHC)

SVHC:

			CAS No.	RL ()
	141		1306-19-0	0.005
	142		7440-43-9	0.005
	143	(DPP)	131-18-0	0.050
	144	(PF A)	335-67-1	0.050
	145		1306-23-6	0.005
	146		84-75-3	0.050
	147	C. . 28	573-58-0	0.050
	148	C. . 38	1937-37-7	0.050
	149	2-	96-45-7	0.050
	150		301-04-2	0.005
	151		25155-23-1	0.050
	152	()	68515-50-4	0.050
	153		10108-64-2	0.005
	154		-	0.005
	155		7632-04-4	0.005
	156	2-(2H- -2-)-4,6- (V-328)	25973-55-1	0.050
	157	2- -2- -4,6- (V-320)	3846-71-7	0.050
	158	- 2- D TE	15571-58-1	0.050
	159	- 2- D TE - (2-) TE	-	0.050
	160		7790-79-6	0.005



(SVHC)

SVHC:

			CAS No.	RL ()
	161		10124-36-4, 31119-53-6	0.005
	162	1,2- , (C6-10) / 1,2- , 0.3	68515-51-5, 68648-93-1	0.050
	163	5- -2-(2,4- -3- -1-)-5- -1,3- 1 5- -2-(4,6- -3- -1-)-5- -1,3- 2 1 2	-	0.050
V	164	1,3-	1120-71-4	0.050
V	165	2,4- -6-(5- -2- (V-327)	3864-99-1	0.050
V	166	2-(2H- -2-)-4-()-6-() (V-350)	36437-37-3	0.050
V	167		98-95-3	0.050
V	168		375-95-1,21049-39-8, 4149-60-4	0.050
V	169	()	50-32-8	0.050
/	170	4,4- A	80-05-7	0.050
/	171	4- ()	-	0.050
/	172	4-	98-54-4	0.050
/	173	1,2,4-	552-30-7	0.050
/	174	PFDA	3108-42-7 335-76-2 3830-45-3	0.050
/	175		80-46-6	0.050



No. CANEC1622421316

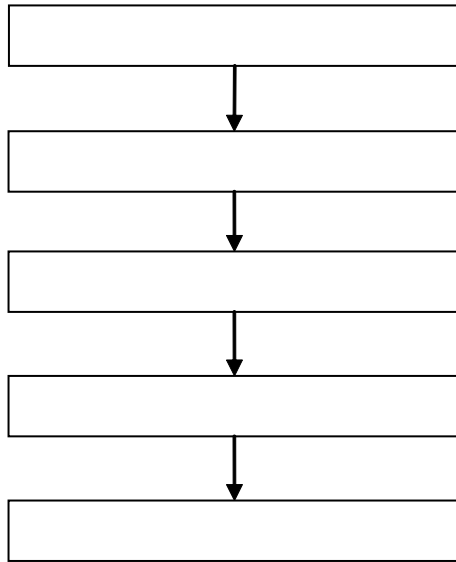
: 2016 11 21

15 , 16

(SVHC)

SVHC

- 1) /
- 2)





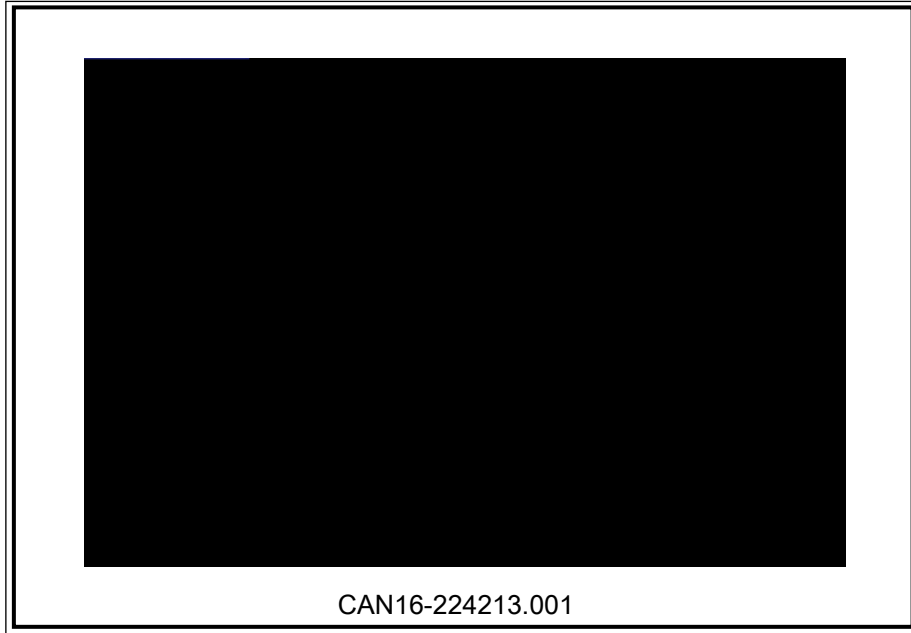
No. CANEC1622421316

: 2016 11 21

16 , 16

(SVHC)

:



SGS

