



# Test Report

No. CANEC1822722919

Date: 13 Nov 2018

Page 1 of 6

SHEN ZHEN NIKTO TAPE NEW MATERIAL CO.,LTD.  
BUILD 52,ZHONGWU INDUSTRIAL ZONE,HANGCHENG,BAO`AN DISTRICT,SHENZHEN CHINA

The following sample(s) was/were submitted and identified on behalf of the clients as : PET double side adhesive tape 9

SGS Job No. : CP18 059011 SZ

Date of Sample Received : 02 Nov 2018

Testing Period : 02 Nov 2018 - 08 Nov 2018

Test Requested : Selected test(s) as requested by client.

Test Method : Please refer to next page(s).

Test Results : Please refer to next page(s).

Conclusion : Based on the performed tests on submitted sample(s), the results of Lead, Mercury, Cadmium, Hexavalent Chromium, Polychlorinated biphenyls (PCBs), Polychlorinated diphenyl ethers (PCDEs) and Phthalates such as Bis(2-ethylhexyl) phthalate (DEHP), Butylbenzyl phthalate (BBP), Dibutyl phthalate (DBP), and Diisobutyl phthalate (DIBP) comply with the limits as set by RoHS Directive (EU) 2015/863 amending Annex II to Directive 2011/65/EU.

!#\$%&'()\*+,\$-./:;<=>?@A B C D E F G H I J K L M N O P Q R S T U V W X Y Z [ \ ] ^ \_ ` { | } ~ ¡ ¢ £ ¤ ¥ ¦ § ¨ © ª « ¬ ® ¯ ° ± ² ³ ´ µ ¶ · ¸ ¹ º » ¼ ½ ¾

Zmguan  
Approved Signator

# Test Report

No. CANEC1822722919

Date: 13 Nov 2018

Page 2 of 6

Test Results :

Test Part Description :

Specimen No.	SGS Sample ID	Description
SN1	CAN18 227229.002	Transparent double side adhesive tape

Remarks :

- (1) 1 mg/ g 1 ppm 0.0001
- (2) MDL Method Detection Limit
- (3) ND Not Detected ( MDL )
- ( ) Not Regulated

## RoHS Directive (EU) 2015/863 amending Annex II to Directive 2011/65/EU

Test Method : With reference to IEC 62321 :2013 A1:2017, IEC 62321 5:2013, IEC 62321 7 2:2017 , IEC 62321 6:2015 and IEC 62321 8:2017, analysed by ICP OES , U is and GC MS .

<u>Test Item(s)</u>	<u>Limit</u>	<u>Unit</u>	<u>MDL</u>	<u>002</u>
Cadmium (Cd)	100	mg/ g	2	ND
Lead (Pb)	1,000	mg/ g	2	ND
Mercury (Hg)	1,000	mg/ g	2	ND
Hexavalent Chromium (Cr VI)	1,000	mg/ g	8	ND
Sum of PBBs	1,000	mg/ g		ND
Monobromobiphenyl		mg/ g	5	ND
Dibromobiphenyl		mg/ g	5	ND
Tribromobiphenyl		mg/ g	5	ND
Tetrabromobiphenyl		mg/ g	5	ND
Pentabromobiphenyl		mg/ g	5	ND
Hexabromobiphenyl		mg/ g	5	ND
Heptabromobiphenyl		mg/ g	5	ND
Octabromobiphenyl		mg/ g	5	ND
Nonabromobiphenyl		mg/ g	5	ND
Decabromobiphenyl		mg/ g	5	ND
Sum of PBDEs	1,000	mg/ g		ND
Monobromodiphenyl ether		mg/ g	5	ND
Dibromodiphenyl ether		mg/ g	5	ND
Tribromodiphenyl ether		mg/ g	5	ND
Tetrabromodiphenyl ether		mg/ g	5	ND
Pentabromodiphenyl ether		mg/ g	5	ND

## Test Report

No. CANEC1822722919

Date: 13 Nov 2018

Page 3 of 6

<u>Test Item(s)</u>	<u>Limit</u>	<u>Unit</u>	<u>MDL</u>	<u>002</u>
He abromodiphen I ether		mg/ g	5	ND
Heptabromodiphen I ether		mg/ g	5	ND
O tabromodiphen I ether		mg/ g	5	ND
Nonabromodiphen I ether		mg/ g	5	ND
De abromodiphen I ether		mg/ g	5	ND
Dibut I phthalate (DBP)	1,000	mg/ g	50	ND
But I ben I phthalate (BBP)	1,000	mg/ g	50	ND
Bis (2 eth l he I) phthalate (DEHP)	1,000	mg/ g	50	ND
Diisobut I Phthalates (DIBP)	1,000	mg/ g	50	ND

### Notes :

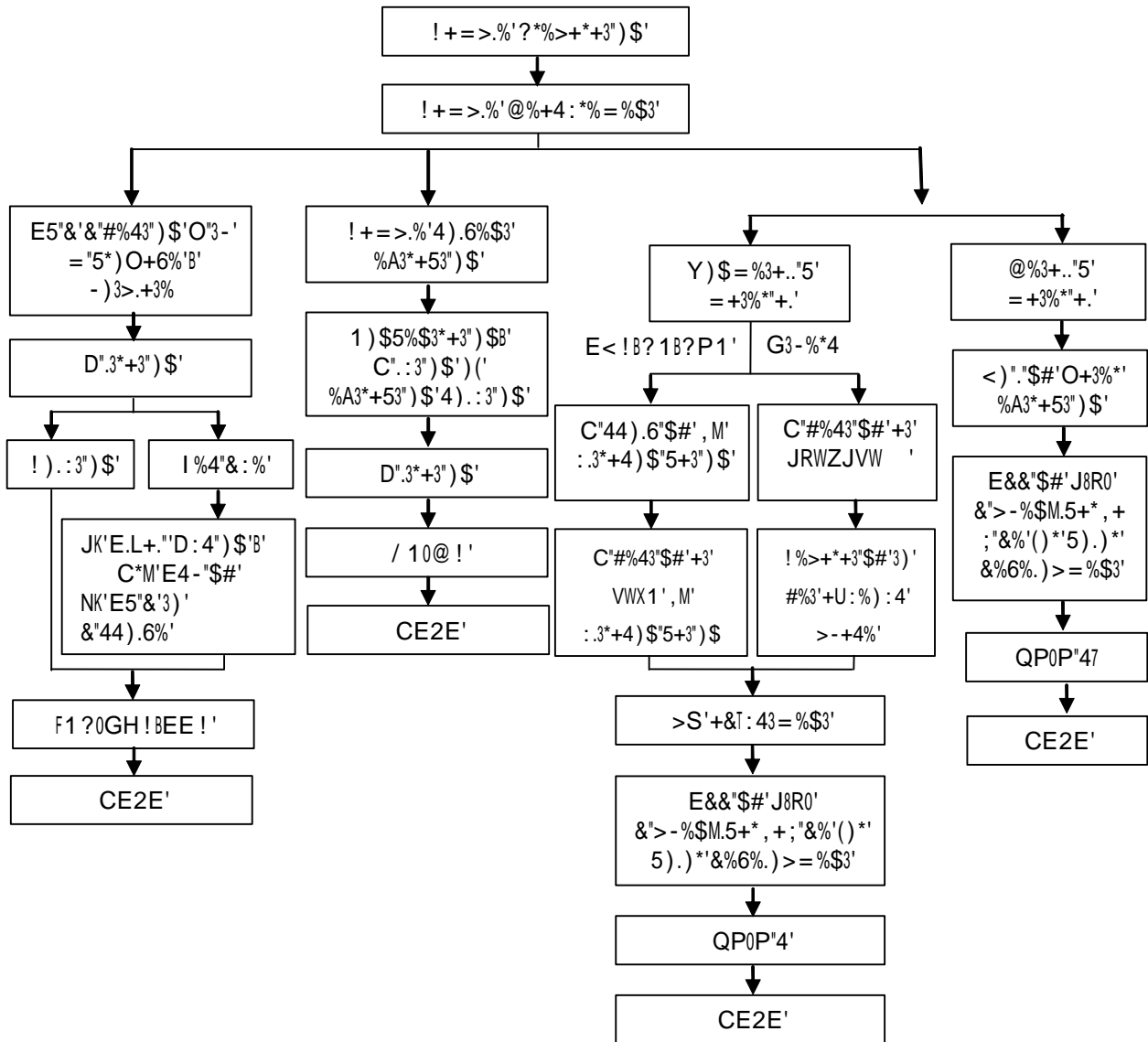
(1) The maximum permissible limit is quoted from RoHS Directive (EU) 2015/863. IEC 62321 series is equivalent to EN 62321 series

<http://www.enele.eu/d n/www/f p 10 :30:17 2232870351101::: SP ORG ID, SP LANG ID:1258637,25>

ATTACHMENTS

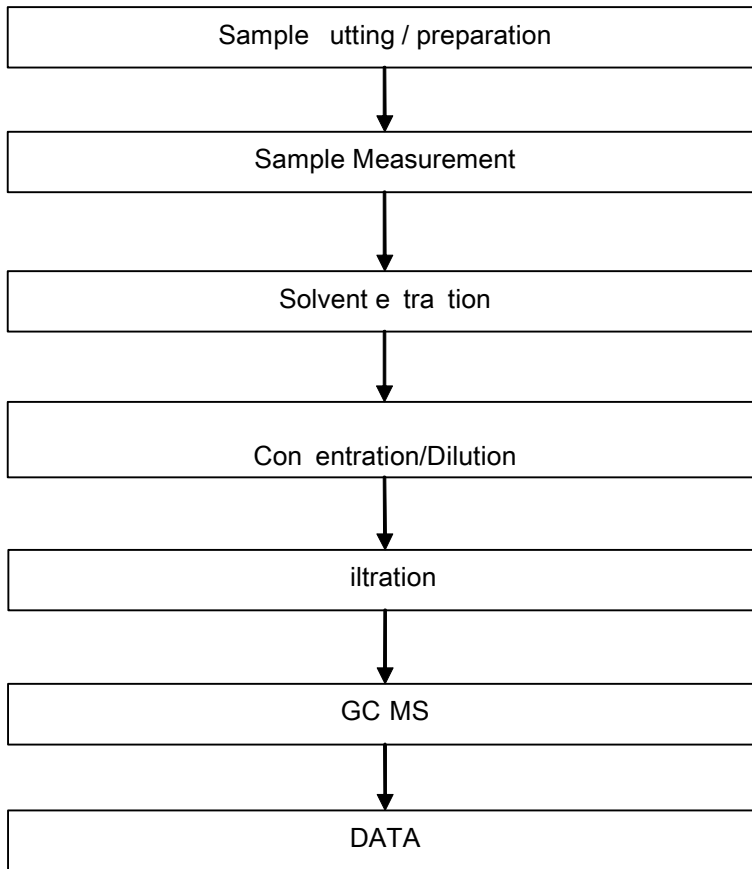
Pb/Cd/Hg/Cr<sup>6</sup> /PBBs/PBDEs Testing low Chart

1) These samples were dissolved total b pre conditioning method a ording to below flow hart.  
(Cr<sup>6</sup> and PBBs/PBDEs test method e luded).

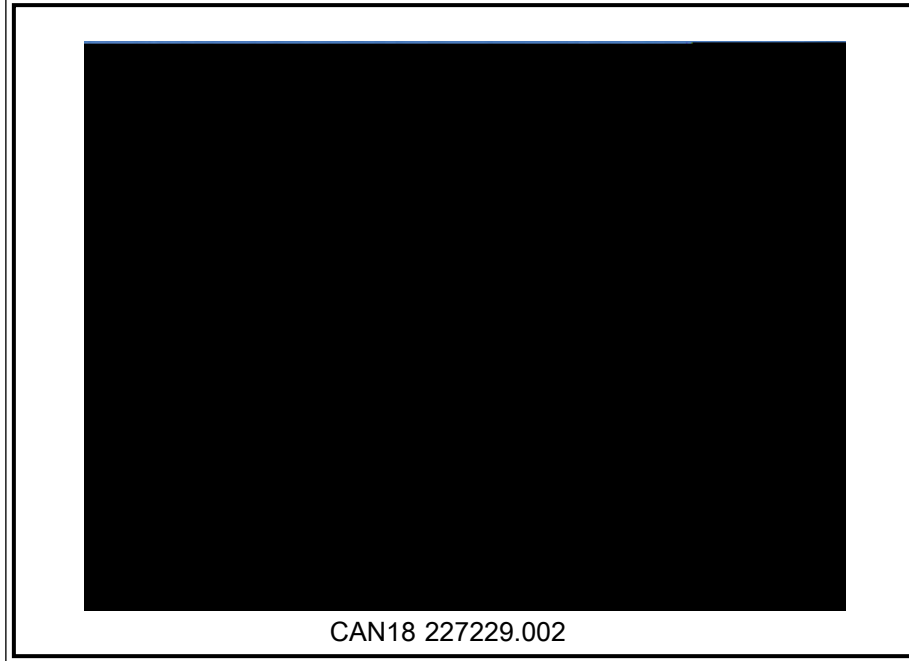


ATTACHMENTS

Phthalates Testing flow Chart



Sample photo:



SGS authentic ate the photo on original report onl

End of Report